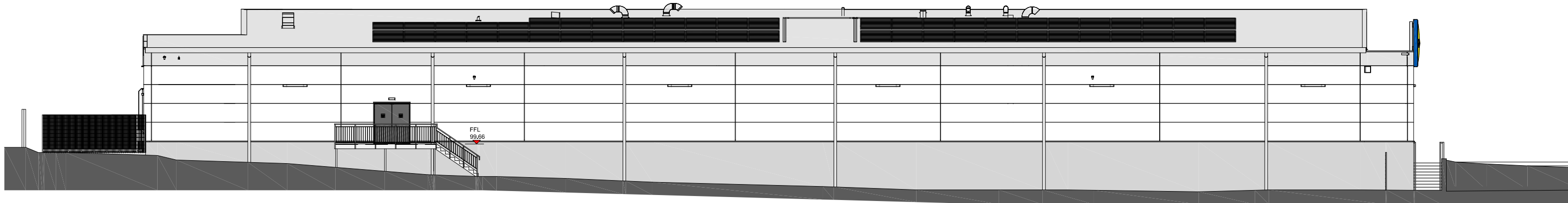
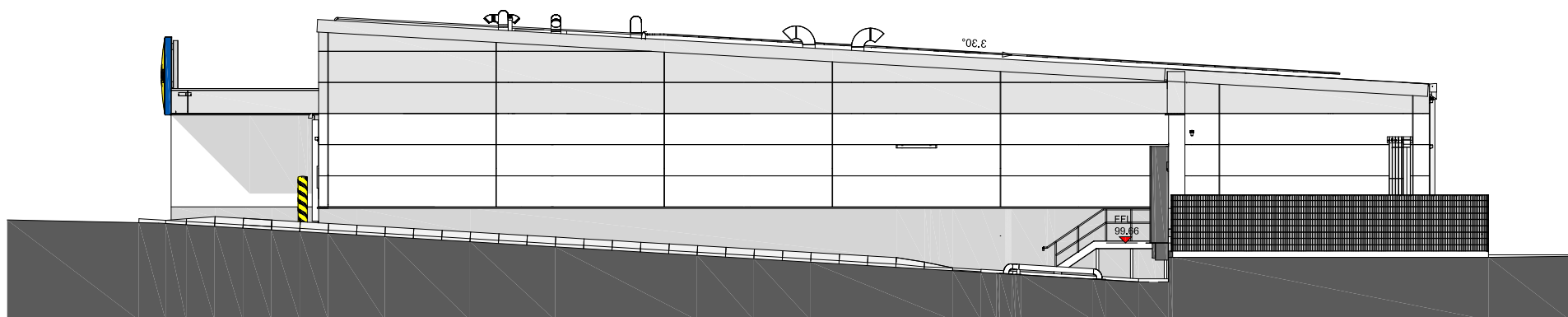


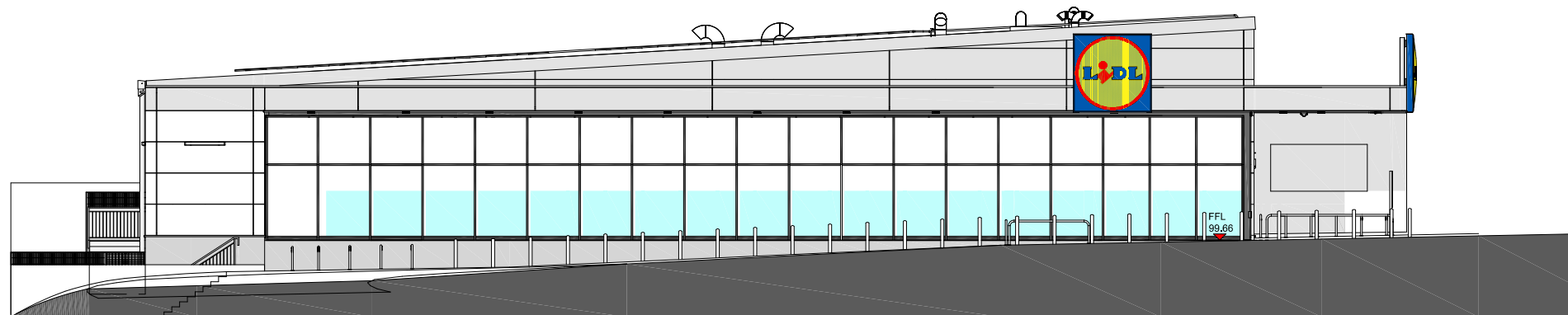
EAST ELEVATION



WEST ELEVATION



NORTH ELEVATION



SOUTH ELEVATION

Materials - key to codes

- 1 External Wall Render below cladding
External fair face float finished waterproof / splash-proof mineral render in 2 layers to 20mm thickness with 0.25mm graining finish to BS 1191: Part 2. All final render to be painted to comply with BS 6150.
Colour: Grey RAL 9006.
- 2 External wall cladding
Cable walls, upper areas of wall elevations, fascias and soffits: metal insulated composite wall panels. "Longspan" panel type to span between structural columns. Vertical joints on grid lines at no more than 6m c/c. Horizontal joints at 1m c/c.
Finish:
a) Above shopfront glazing head 500 RAL 9006 white aluminium
b) Below shopfront glazing head 500 RAL 9010 pure white
- 3 Roof coverings
a) Main roof: Trapezoidal metal composite panel roofing system in RAL 9006 silver metallic finish.
b) Canopy flat roof: Sika Trocoat single ply flat roofing membrane on marine ply all in accordance with manufacturer's recommendations.
- 4 External doors
Steel doors and frames, powder coated internally and externally, graphite grey RAL 7024 to 80% gloss finish.
- 5 Sectional door
Delivery area insulated sectional door: 2600mm x H 2800mm; Surface smooth; external colour: graphite grey RAL 7024; Internal colour: light grey white RAL 9002.
- 6 Dock shelter
Model DSL, 3250mm x 3250mm x 500mm projection and 600mm head curtain, with galvanneal steel collapsible Brinsum frame. Front curtains polyester non-flammable 3mm PVC coated to both sides. Colour: black with safety marker stripes.
- 7 Shopfront glazing, entrance lobby and windows
Structural aluminium mullion sections by Schuco or similar approved. All glazing panels to be double-glazed, with laminated safety glass. 8.8 / 16 / min 8.8mm glass unit. Voids argon filled. Inner pane with low-E soft coat. Entrance pod, automatic doors, shopfront glazing and window profiles powder coated RAL 7024 graphite grey on both faces to 35% gloss finish.
- 8 Rainwater pipes and gutters
Polyester powder coated aluminium RAL 9006 metallic silver
- 9 External steps and ladders
Galvanneal steel grey RAL 9006
- 10 Aluminium louvre panel units
Extruded aluminium alloy frame and louvre blades by Kooler GB (UK) to BS EN 755-1. Powder coated RAL 9010. With expanded aluminium alloy 12 mm mesh bird guard and perforated expanded aluminium alloy 3.5 mm mesh insect guard.



& POOLE PATTLE chartered architects
TEL: 01473 230590 FAX: 01473 231589 E-MAIL: mail@poolepattle.co.uk
2 OBSERVATION COCKET 34 PRINCES STREET IPWICH SUFFOLK IP1 1JY

Project	LUPA HOUSE, BOREHAMWOOD	Date	JUL 2017	Scale	1:100 @ A1
Drawing	PROPOSED LIDL - ELEVATIONS	Sheet No.	3470	Page No.	103
		Scale		Orientation	B

WORKING WITH
KLH architects
The Old Steelyard, Poplar Lane
Sproughton, Ipswich, IP8 3HL
t.01473 689532
klh@klharchitects.com
www.klharchitects.com