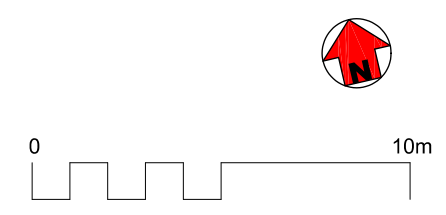


GROUND FLOOR

### SITE B

GEA ground	2,682	sq m
GEA first	292	
GEA total	2,974	
GIA ground	2,600	
GIA first	269	
GIA first	2,869	sq m
With addition of hatched area at rear (see site plan):		
GEA total	2,868	sq m
GIA total	2,780	sq m



**& POOLE PATTLE** chartered architects

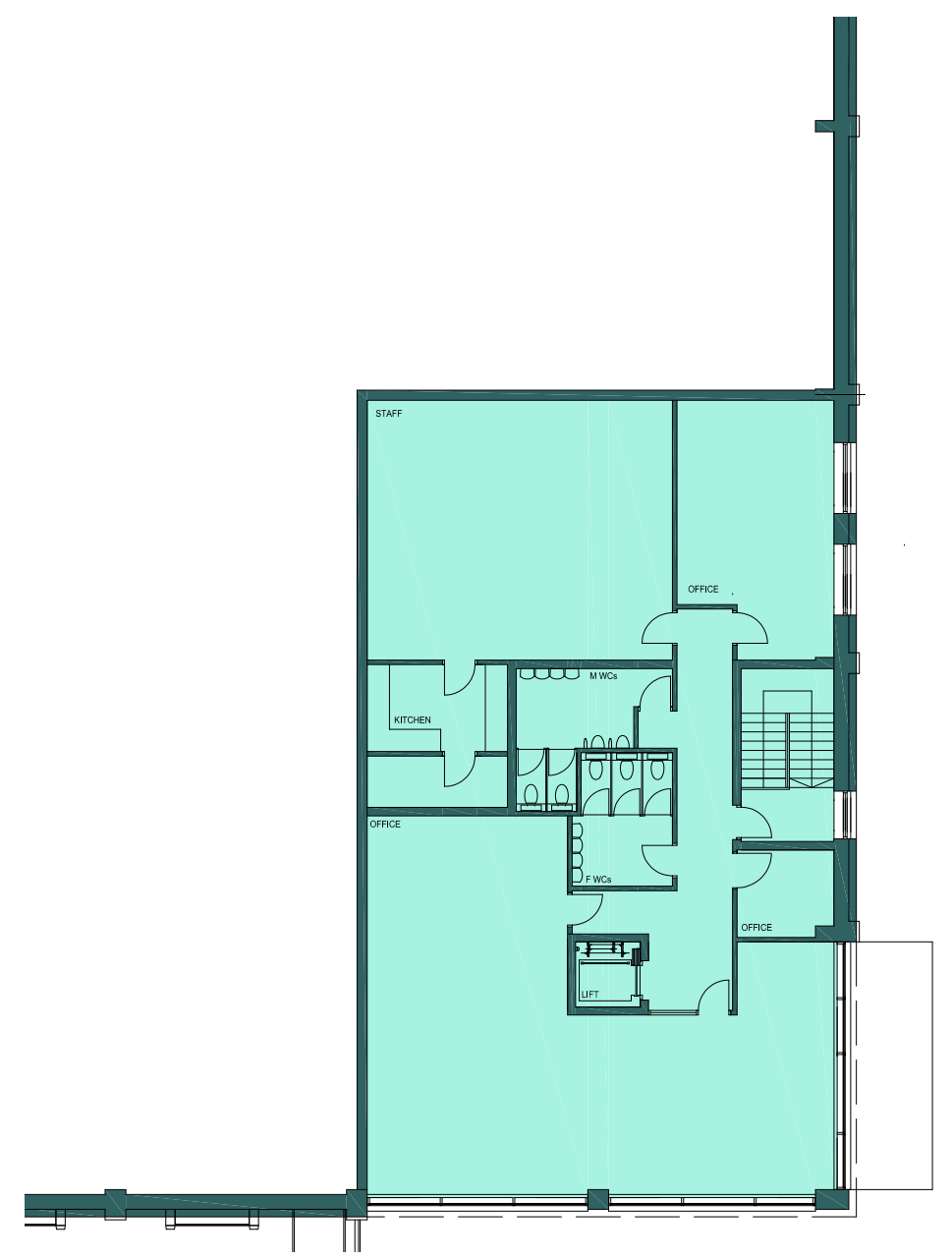
LUPA HOUSE, BOREHAMWOOD MAR 2019 1,200 @ A3

PROPOSED STORE PLAN - SITE B 3470 108

WORKING WITH

**KLH** architects

The Old Steelyard, Poplar Lane  
 Sprooughton, Ipswich, IP8 3HL  
 t.01473 689532  
 kln@klharchitects.com  
 www.klharchitects.com



FIRST FLOOR